




You will find a bobbin in place under the slide plate of your machine. (To open slide plate, simply draw it gently toward you.) If the bobbin runs out of thread during sewing, you can re-wind it without removing it from the machine. The window in the slide plate lets you see bobbin-thread supply at a glance, to help avoid running out of thread in the middle of a seam.

Preparation Steps

1. Raise the take-up lever to its highest position by pressing lightly on the speed controller or by turning the hand wheel toward you.
2. Raise the presser foot to release tension discs.
3. Open slide plate and make sure bobbin is empty. For removal of bobbin and thread, see page 12.
4. Set pattern-selector release lever by turning it clockwise, see page 14, and set stitch control dials for straight stitching: stitch pattern , needle position  (center) and stitch width .

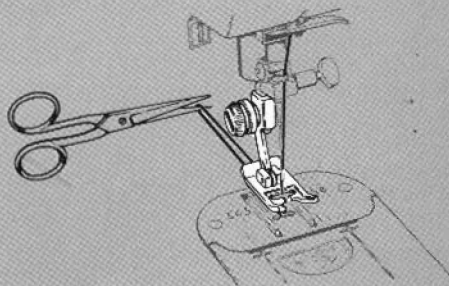
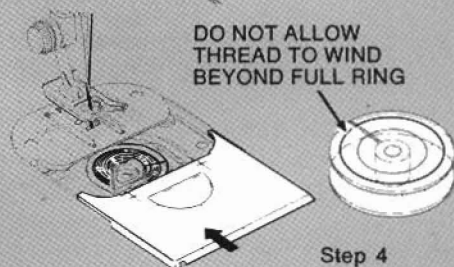
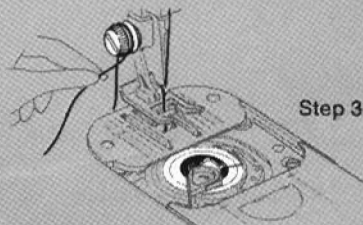
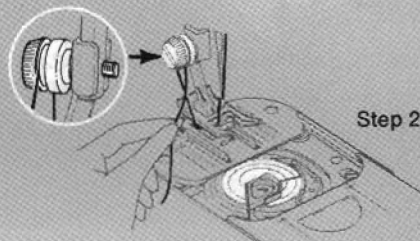
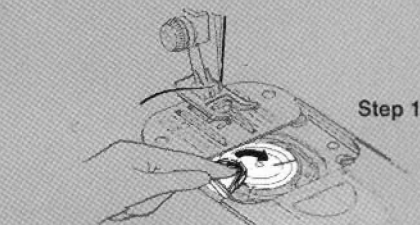
If pattern-selector release lever fails to lock into place, turn the hand wheel slightly toward you and then reset lever.

Winding Steps

1. Move bobbin latch to right (wind position).
2. Draw needle thread back between toes of presser foot, under left side of presser foot, then up, into and around thread retainer, as shown. **Do not hold thread end.** Start the machine, running it at a moderate speed.
3. Pull thread end away after it has separated from bobbin.
 - Keep your eye on the bobbin as it fills. Do not allow thread to wind beyond the outside FULL ring.
4. Close slide plate to release bobbin latch to sewing position.

To start sewing, pull thread back under presser foot and cut. Place threads diagonally under foot to right or left side, position needle in fabric where desired, lower presser foot, and start machine.

Winding Steps



Cutting Continuous Thread