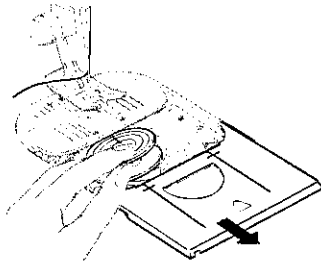
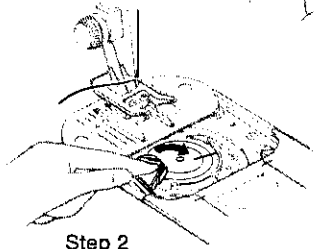


Bobbin Winding Steps

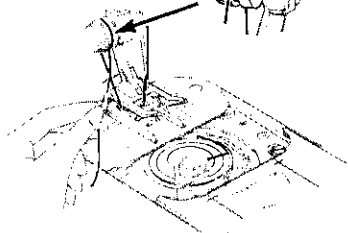
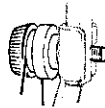
Thread Slot



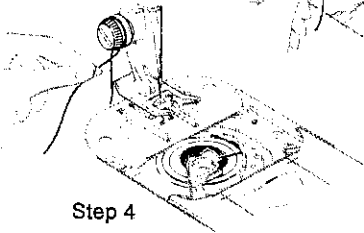
Step 1



Step 2

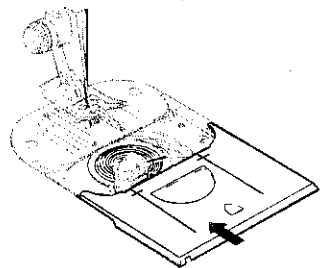


Step 3



Step 4

Do Not Allow
Thread To Wind
Beyond FULL Ring



Step 5

THE BOBBIN

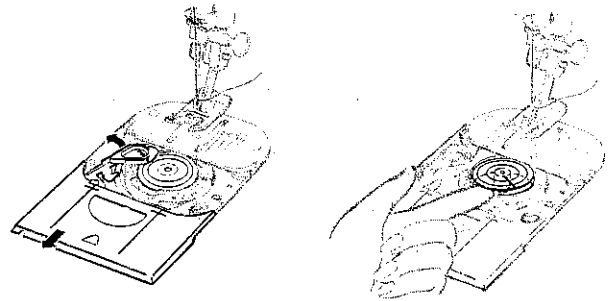
Winding the Bobbin

1. Open slide plate. Move bobbin latch to left. Slip empty bobbin with the slot on top into case. Leave slide plate open until bobbin is wound. Turn on power switch. Press straight-stitch button.
2. Move bobbin latch to right into wind position.
3. Draw needle thread back, under left side of presser foot, then up and around and into thread retainer. Do not hold thread end. Start machine running at moderate speed.
4. Pull thread end away after it has separated from bobbin. Do not allow thread to wind beyond outside FULL ring.
5. Close slide plate. Before starting to sew, pull thread back under presser foot and cut, leaving about four inches.

www.geocities.com/tf43

Removing the Bobbin

Raise take-up lever. Open slide plate; move bobbin latch to left. Remove bobbin by inserting finger under rim.



Removing Bobbin